



TECHNICAL DATA SHEET

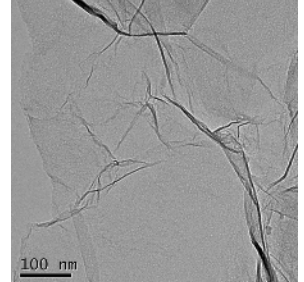
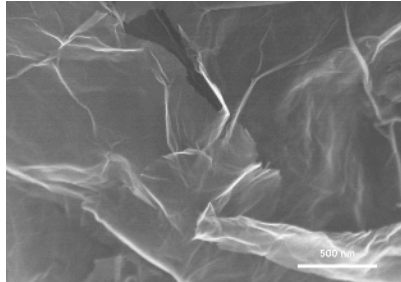
PRODUCT: Graphene Powder

Gi-PW-B050 (N002-PDR)

CAS# 1034343-98-0

GENERAL CHARACTERISTICS:

Single Layer Graphene (low oxygen, high density)
Fluffy, Light Powder



DESCRIPTION:

High density single layer graphene with a high surface area

PRODUCT DETAILS:

Average lateral dimension: 4 μm
Thickness: 0.35 - 2 nm
Oxygen content: < 2.5%
Specific surface area: 400 - 800 m^2/g
Tap density: 0.01 - 0.02 g/cm^3
Average aspect ratio: 3000 : 1

Carbon by wt%*: $\geq 95\%$
Hydrogen by wt%*: $\leq 2.00\%$
Nitrogen by wt%*: $\leq 0.50\%$
Oxygen by wt%*: $\leq 2.00\%$
Ash by wt%*: $\leq 2.50\%$

PARTICLE SIZE DISTRIBUTION:

MT10*: TBD
MT50*: TBD
MT90*: TBD

PHYSICAL SIZE DISTRIBUTION:

Average lateral dimension (x & y)*: \leq TBD
Average through-plane dimension (z)*: TBD

* Performed by outside test facility

** As estimated by BET and particle size distribution data

Global Graphene Group, Inc. (G³) believes this information to be accurate as of the publication date. G³ assumes no liability for the information in this technical data sheet. G³ encourages its customers to review the manufacturing processes and applications for their products from the standpoint of human health and environmental quality to ensure that this material is not utilized in ways for which it is not intended or tested. No warranties on any of the specifications are given. Product literature and material data sheets should be consulted prior to use.

Please contact Global Graphene Group for the most current technical information.

P: (937) 331-9884

Date Written: September 7, 2018

Revision Date: September 7, 2018