



## TECHNICAL DATA SHEET

---

**PRODUCT:** Graphene-Composite Si Anode (GCA™)

Graphene CAS# 7782-42-5

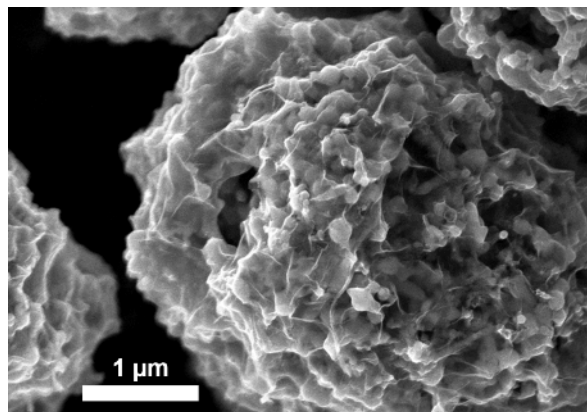
Silicon CAS# 7440-21-3

**GENERAL CHARACTERISTICS:**

A fine dark grey powder.

**DESCRIPTION:**

Silicon nano-particles wrapped and channeled with graphene.



**PRODUCT DETAILS:**

Particle Size  $D_{50}$ : 3 - 15  $\mu\text{m}$  (tunable)

Specific Surface Area: 10 - 25  $\text{m}^2/\text{g}$  (tunable)

Tap Density: 0.4 - 0.7  $\text{g}/\text{cm}^3$

Specific Capacity\*: 2000 - 2600  $\text{mAh}/\text{g}$

First Cycle Efficiency\*\*: > 88%

**FEATURES:**

Spherical morphology, nano-silicon (non-CVD), high reversible capacity and high 1<sup>st</sup> cycle efficiency, efficient Li-ion storage, compatible with most binders, and easily blended with various forms of graphite.

\* Performed by outside test facility

\*\*Data above were collected at the rate of 0.05 C and within the voltage window of 0.01 V and 1.5 V (CC)

Global Graphene Group, Inc. (G<sup>3</sup>) believes this information to be accurate as of the publication date. G<sup>3</sup> assumes no liability for the information in this technical data sheet. G<sup>3</sup> encourages its customers to review the manufacturing processes and applications for their products from the standpoint of human health and environmental quality to ensure that this material is not utilized in ways for which it is not intended or tested. No warranties on any of the specifications are given. Product literature and material data sheets should be consulted prior to use.

Please contact Global Graphene Group for the most current technical information.

P: (937) 331-9884

Date Written: June 14, 2019

Revision Date: June 14, 2019

---