



TECHNICAL DATA SHEET

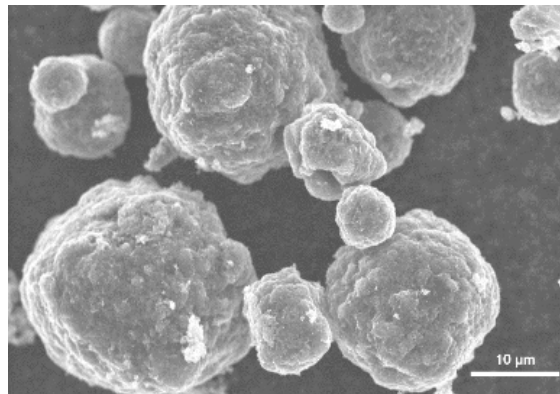
PRODUCT: Graphene-Sulfur Composite Cathode

Graphene Oxide CAS# 1034343-98-0
Sulfur CAS# 7704-34-9
Carbon Black CAS# 1333-86-4

GENERAL CHARACTERISTICS:

Black powder

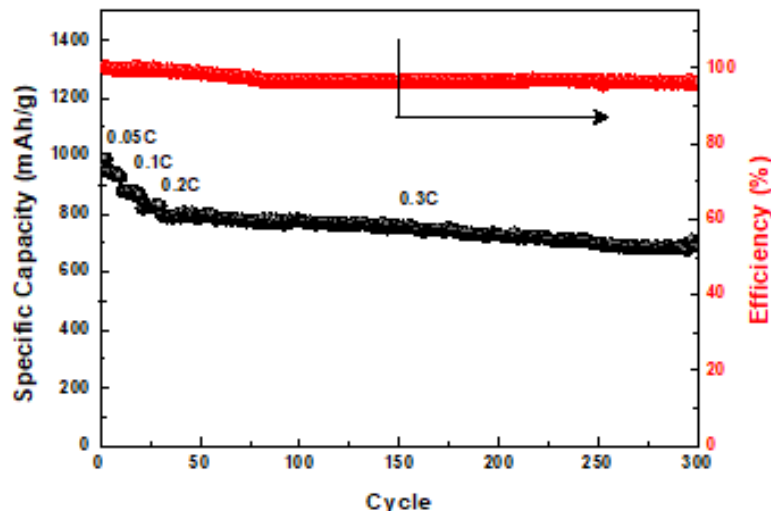
DESCRIPTION:



Sulfur is a notable alternative to today's intercalation-type cathode materials, setting itself apart by using a unique conversion chemistry whereby one sulfur atom can host two lithium ions.

PRODUCT DETAILS:

Particle Size D_{50} : 10 - 15 μm (tunable)
Specific Surface Area: 10 - 20 m^2/g (tunable)
Packing Density: 1.1 - 1.3 g/cm^3
Tap Density: 0.5 - 1.0 g/cm^3
Specific Capacity: 850 - 950 mAh/g
First Cycle Efficiency: > 95%



Global Graphene Group, Inc. (G³) believes this information to be accurate as of the publication date. G³ assumes no liability for the information in this technical data sheet. G³ encourages its customers to review the manufacturing processes and applications for their products from the standpoint of human health and environmental quality to ensure that this material is not utilized in ways for which it is not intended or tested. No warranties on any of the specifications are given. Product literature and material data sheets should be consulted prior to use.

Please contact Global Graphene Group for the most current technical information.

P: (937) 331-9884

Date Written: September 26, 2019

Revision Date: March 20, 2020